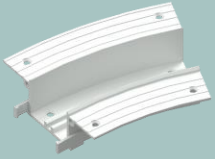


TRACKTRIM CURVE SECTIONS

Recommendations and Procedures



TR250

250 mm or 9.8" Radius



TR290

290 mm or 11.4" Radius



TR300

300 mm or 11.8" Radius



TR330

330 mm or 13" Radius



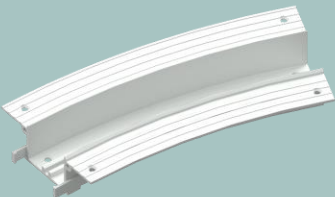
TR365

365 mm or 14.4" Radius



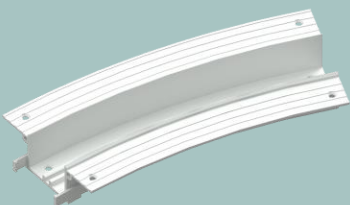
TR440

440 mm or 17.3" Radius



TR480

480 mm or 18.9" Radius



TR508

508 mm or 20" Radius

When using Tracktrim curve sections, it is best practice to not install and mud-in the Tracktrim system until you have the drapery track that it will house.

Custom and/or automated drapery tracks that have turns or curves can vary slightly from order specifications in ways that can cause difficulty for a pre-installed housing such as Tracktrim.

Before cutting down and installing your Tracktrim system, have the actual drapery track on hand that it will house and ensure the fit and measurements.