

Light & Shade

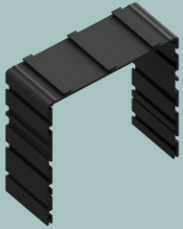
S O L U T I O N S

Product Catalog

M Series

Boxes

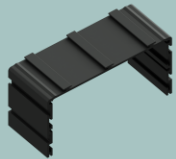
M130x130 Modular 5" box



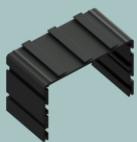
M100x100 Modular 4" box



M130x70 Modular box door/cover for M100x__



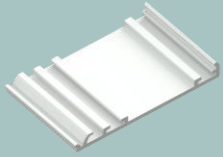
M100x70 Modular box door/cover for M130x__



M Series

Doors/Covers

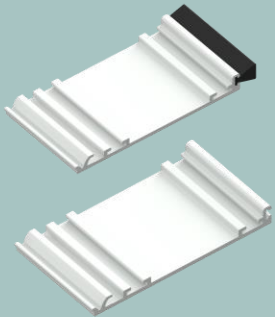
MC80 Modular 80mm box door/cover for M130x130



MC50 Modular 50mm box door/cover for M100x100



MC90B Modular 90mm box door/cover with Brush Attachment for M130x130



MC60B Modular 60mm box door/cover with Brush Attachment for M130x130



M Series

Flanges and Finished Side Covers

MSC130 Modular 5" finished side cover



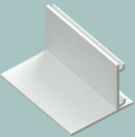
MSC100 Modular 4" finished side cover



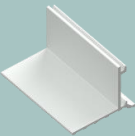
MSC70 Modular Side Box finished side cover



MPF Modular Plain/Visible Flange for painted finish



MSF Modular Skim Coat Flange



M Series

End Caps

MEC130x130 Modular 5" End cap



MEC100x100 Modular 4" End cap



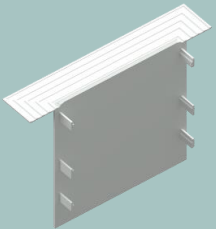
MEC130x70 Modular 5" Side Box End cap



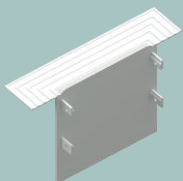
MEC100x70 Modular 4" Side Box End cap



MEC130x130F Modular 5" Skim Coat Flange End cap, requires modular set up with two Skim Coat flanges (MSF)



MEC130x130F Modular 4" Skim Coat Flange End cap, requires modular set up with two Skim Coat flanges (MSF)

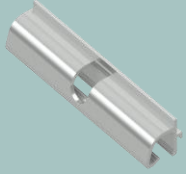


M Series

Accessories

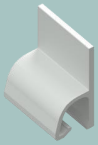
MCH

Modular box door/cover hinge



MWH

Modular wall door/cover hinge attachment, for door installation without a box



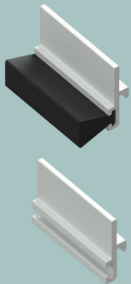
MBL

Modular bracket for Lutron brand shade install



MBH

Modular Brush Holder



C Series

C ___x___ Custom Boxes, any size available for manufacture locally

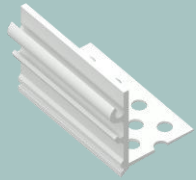


CCH Custom Box door/cover hinge

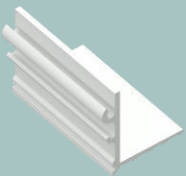
CNF Custom Blank or No Flange



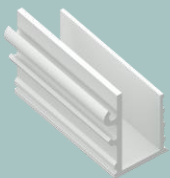
CPF Custom Perforated Flange



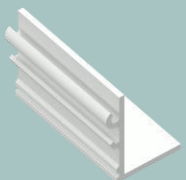
CSF Custom Skim Coat Flange



CUF Custom Upstand Flange

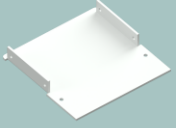


CVF Custom Visible/Plain Flange



C Series

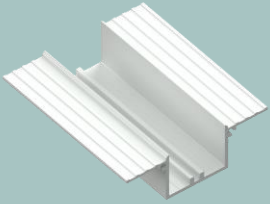
CEC__ Custom End Cap, available any size for manufacture locally



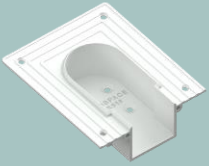
CC Custom Door/cover, available in 65, 75, 85, 95, 115, 125, 150, and 200mm

Tracktrim

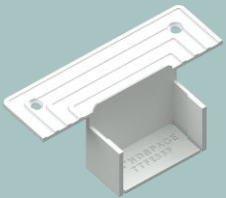
TT1F Drapery track with fixing track



TTCRF Return Box with Flanges for Crestron System



TTFE35F Flat Ends w Flange for Manual 35mm Drapery Tracks



TTFE35 Flat Ends with Flange for Manual 35mm Drapery Tracks



SPLI1 Long splice pin to align boxes and Tracktrim tracks

SPLI2 Short splice pin to connect curved sections

CTP Curtain Track Protector

TTLMF Motor Box w Flanges for Lutron System



Tracktrim

TTLRF

Return Box w Flanges for Lutron System



TTL1

Fixing Bracket for Lutron Drapery Track

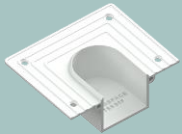
TTSMF

Drapery track with fixing track



TTSRF

Drapery track with fixing track



TTS1

Fixing Bracket for Somfy Glydea Drapery Track

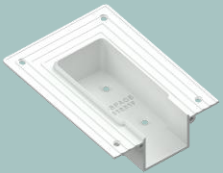
TTSG51MF

Motor Box with Flanges for Silent Gliss 5100 System



TTSG51RF

Return Box w Flanges for Silent Gliss 5100 System



TTSSG1

Fixing Bracket for Silent Gliss 5100 Drapery Track

Tracktrim

TTSG56MF Motor Box w Flanges for Silent Gliss 5600 System



TTSG56RF Return Box w Flanges for Silent Gliss 5600 System



TTSSG2 Fixing Bracket for Silent Gliss 5600 Drapery Track

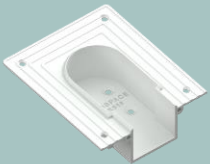
TTCMF

Motor Box with Flanges for Crestron System



TTCRF

Return Box with Flanges for Crestron System



TTC1

Fixing Bracket for Crestron Drapery Track

TR250

Curved Section 22.5° with 250mm (9.8") Radius



Tracktrim

TR290

Curved Section 22.5° with 290mm (11.4") Radius



TR300

Curved Section 22.5° with 300mm (11.8") Radius



TR330

Curved Section 22.5° with 330mm (13") Radius



TR365

Curved Section 22.5° with 365mm (14.4") Radius



TR440

Curved Section 22.5° with 440mm (17.3") Radius



TR480

Curved Section 22.5° with 480mm (18.9") Radius



Tracktrim

TR508

Curved Section 22.5° with 508mm (20") Radius



Qmotion, Goelst, and Erfal brand compatible options are also available.

Order Creation

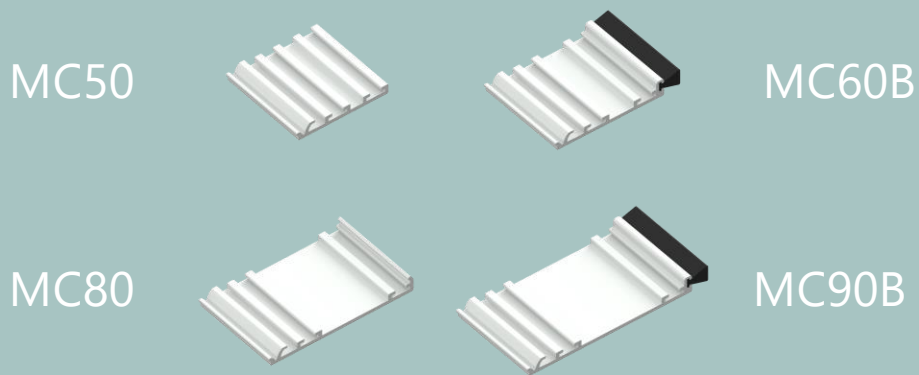
M Series

3. Next you decide on a door/cover option.

The 50mm (MC50) and 60mm (MC60B) options are intended for the M100x100 and the 80mm (MC80) and 90mm (MC90B) options are intended for the M130x130.

You can choose a brush edge option or a plain edge depending on your preferred look/function.

Here are visuals of each option



Example continued...

We could add equivalent lengths of the MC60B and MC90B
The order would now look like,

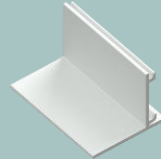
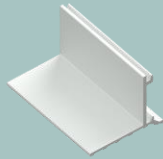
Product	Quantity
M130x130 (5m)	4
M100x100 (precut)	3' and 4'
MC90B (5m)	4
MC60B (precut)	3' and 4'

Order Creation

M Series

4. Determine which type of flanges and/or side covers you will have. You can have one on each side. Two flanges, one flange and one finished side, or two finished sides.

MSF
Modular skim coat
flange



MPF
Modular Plain or Visible
flange

MSC100
Modular 4" Finished
Side Cover

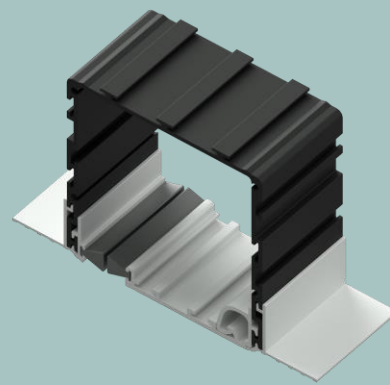
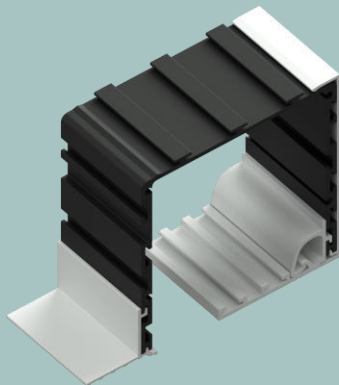


MSC130
Modular 5" Finished
Side Cover

Flanges offer a mud in or paint in finish, whereas side covers offer a snug fit to the enclosure and/or a tight space solution.

Our most popular option is the skim coat or mud-in flange (MSF), this is a very clean finish that works well with compatible ceilings.

Here are some finished configuration visuals.



Feel free to call us at +1 (877) 587-4233 or email support@lightandshadesolutions.net for support choosing your modular setup

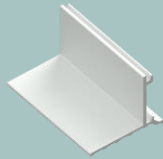
Order Creation

M Series

5. (Example Portion)

Determine which type of flanges and/or side covers you will have.

MSF
Modular skim coat
flange



MPF
Modular Plain or Visible
flange

MSC100
Modular 4" Finished
Side Cover



MSC130
Modular 5" Finished
Side Cover

Ex.

Let's say the M100x100s have MSC100 and MSF
And the M130x130s have two MSF

The excess MSF from the M130x130s is long enough to be used on the
M100x100s, so 8 5m lengths is enough

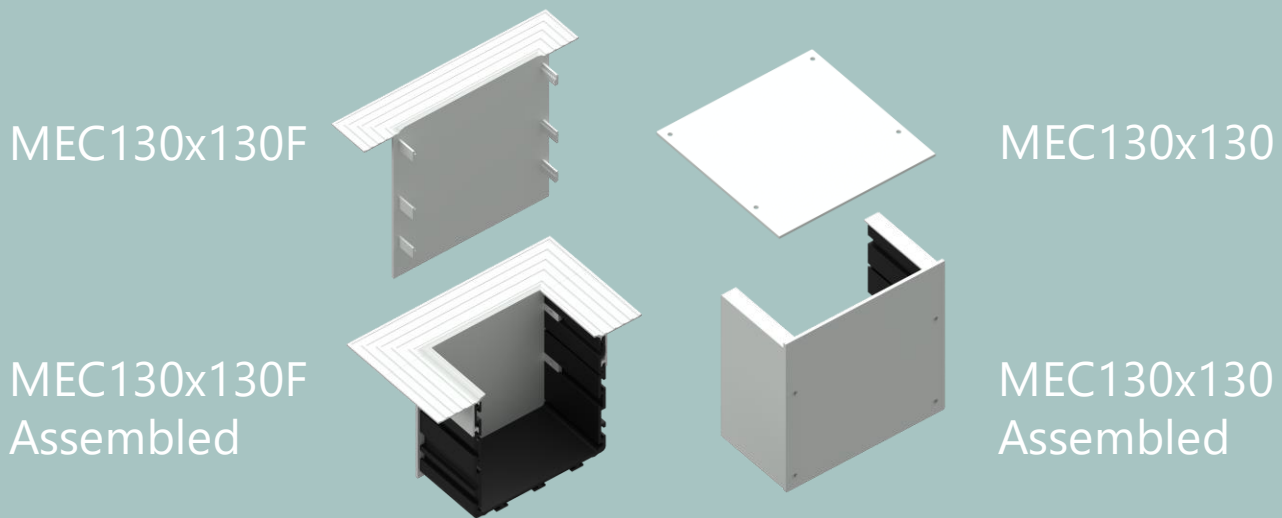
Product	Quantity
M130x130 (5m)	4
M100x100 (precut)	3' and 4'
MC90B (5m)	4
MC60B (precut)	3' and 4'
MSF (5m)	8
MSC100 (precut)	4' and 3'

Feel free to call us at +1 (877) 587-4233 or email
support@lightandshadesolutions.net for support choosing your modular setup

Order Creation

M Series

6. Based on the number of enclosures, add 2 equivalent MEC
If you have an enclosure with two MSFs, you have the choice of using the MEC__x__Fs as shown below.
Consider any splice kits needed and add accordingly.
Add at least two hinges (MCH) per enclosure, also recommended to have one at least every 3 feet.



Example continued...

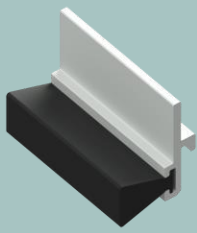
We could add 12 MEC130x130Fs and 4 100x100 MEC100x100s
The order would now look like,

Product	Quantity
M130x130 (5m)	4
M100x100 (precut)	3' and 4'
MC90B (5m)	4
MC60B (precut)	3' and 4'
SPLA1	1
MSF (5m)	8
MSC100 (precut)	4' and 3'
MEC130x130F	12
MEC100x100	4
MCH	21

Order Creation

M Series

7. Decide if any additional attachments are needed.



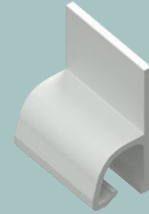
MBH
Modular Brush
Holder

Attaches opposite to the door/cover, usually with a brush door/cover



MLB
Modular Lutron
Bracket

Used to hang a Lutron brand shade inside a M Series box (shade can be hung with just the standard Lutron bracket, this is an alternative, both can work) Sold in 1m pieces

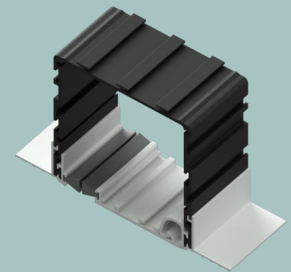


MWH
Modular Wall
Hinge

For use of the M Series door/cover system without a M Series box, attaches to a wall or built-in shade pocket

MLB Pieces Ratio

Pieces Recommended	Shade Length
1	< 6'
2	< 9'
3	< 12'
4	< 15'



Visual of MBH used with the MC60B in a complete box

Feel free to call us at +1 (877) 587-4233 or email support@lightandshadesolutions.net for support choosing your modular setup

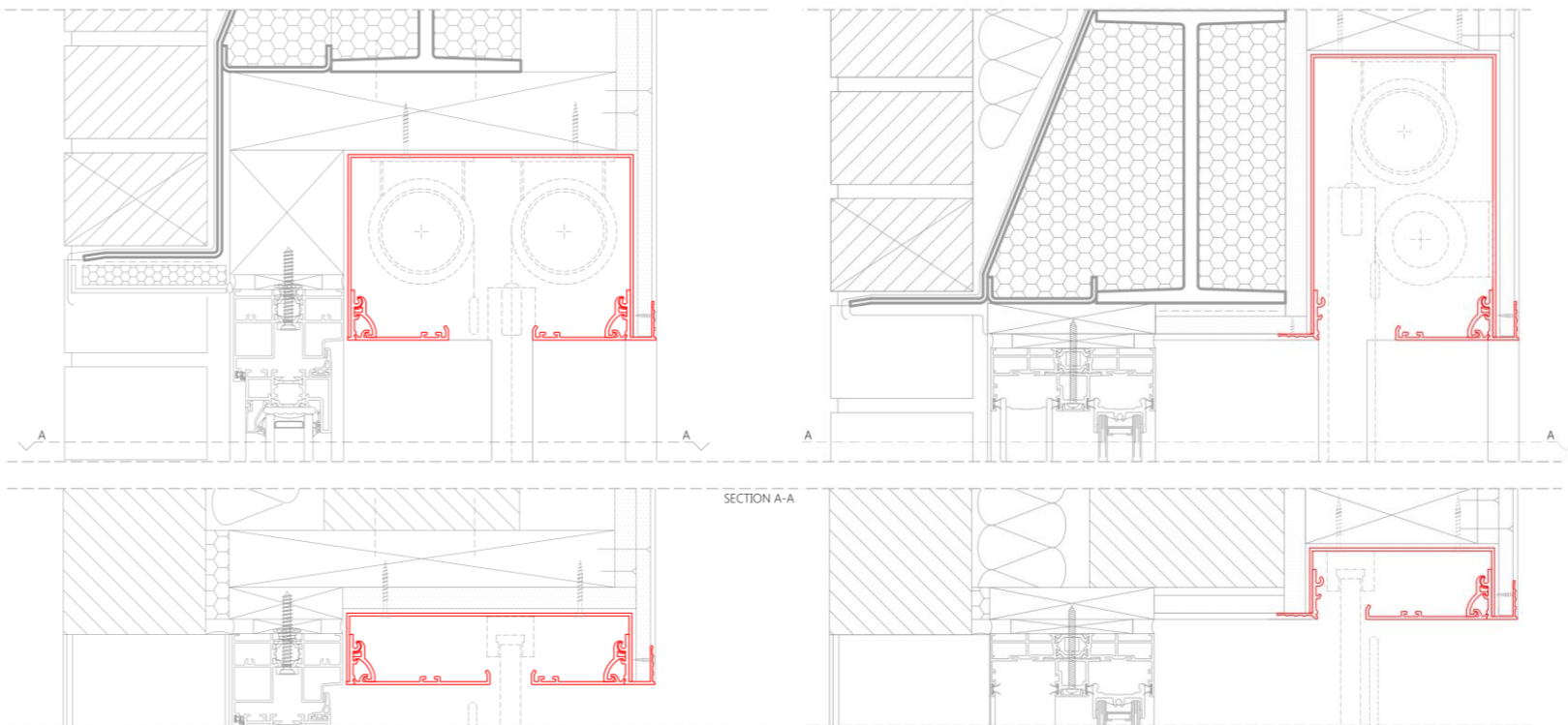
Order Creation

C Series

1. Layout your purpose and plan for the boxes. Note the specified roller shade sizes. Consider any special configurations.

If you plan to do something unique in regards to configuration with the C Series, there are many options on how the C Series can be used.

The most common is to create two layers of shades in one box. Be careful in your calculations when creating a box for these, make sure and leave some leeway in the box for installation and movement. Keep in mind the size roller shades you are using as well. Use the previous page information as well as your configuration intent to create your size.



Feel free to call us at +1 (877) 587-4233 or email support@lightandshadesolutions.net for support choosing your custom setup

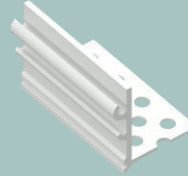
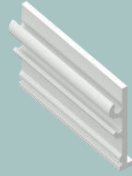
Order Creation

C Series

3. Choosing flanges

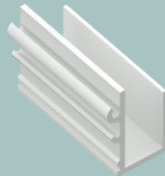
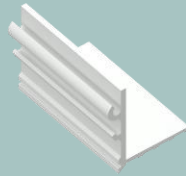
You need to have a flange on either side of a C series set up. You can have two different or the same depending on the intended use.

CNF - Custom Blank or No Flange

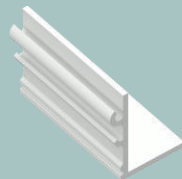


CPF - Custom Perforated Flange

CSF - Custom Skim Coat Flange



CUF - Custom Upstand Flange



CVF - Custom Visible/Plain Flange

Once you've chosen your order will look something like this.

Product	Quantity
C200x200	1
CC150	1
CEC200x200	2
CSF	2
CCH	10

Feel free to call us at +1 (877) 587-4233 or email support@lightandshadesolutions.net for support choosing your custom setup

